



# Bee BUZZ

NEWSLETTER FEBRUARY 2022

## From the President ...

Hello all,

We just held our first meeting of the year and overall the meeting went well. We have several new members who joined and some visitors. The meeting was little light on members who normally attend and it was probably due to COVID status. We tried to have participation over zoom and had problems with passwords. In today's online world you have to use P@sswirds that are harder to guess and sometimes they even stump the owner. I promise to make that work better in the future. We have a couple of members who are going to help out. There was some discussion about using a second projector so we can display zoom on one while having the topics on another so we all can feel connected and even if you are on zoom you can provide

input to the club.

Feb 19<sup>th</sup> is coming up quickly and as of today we have 50 students enrolled for the beginner's beekeeping class. The location is the Knights of Columbus in Edwardsville off Marine road. Thanks to Dennis who is a member of the KC. I think we also have 3 vendors who will be present and giving away door prizes. Box lunch from Jimmy Johns or Subway is lunch. I look forward to greeting all the new students and then turn over a fun filled day to the Bee Class Committee.

Keeping a club running smoothly can take a lot of effort and I know a lot of you are no strangers to this because you have held board positions in the past. It's great to see that we have an excellent mix of experienced beekeepers who join us and continue to help the club all the time.

We still need eager volunteers to assist with everything which leads me to the vote on Jan 28<sup>th</sup> on food. When I was at the Thanksgiving meeting I barely walked into the kitchen and was informed that it is time for others to step up and help in the kitchen. This subject came up again when the board met in December and again in January. Most of the discussion was about: Was it a distraction or is it part of the whole social engagement that makes up the identity of the club? We decided to vote on it at the next membership meeting held January 28<sup>th</sup>. The vote was conducted and members favored stopping food at the meetings. A couple of members expressed discontent with the vote who were unable to physically be present at the meeting. Because Zoom was not working, and we want any person who attends the zoom session to have a say, the board has thrown out the vote.

Page 3 President...

### INSIDE THIS ISSUE:

Old Timer's Way	2
President continued	3
Bee Humor	3
Around Bee Yard	3
Bee Class	4
Fireside Bee Chat	5
Announcement	5

## OLD TIMERS' WAYS

By Ken Schaefer

The covid and cold weather have given me time to sit and think; well, sometimes I just sit. The phone is my connection to the outside world, usually offering me an extended warranty or asking if I have been exposed to Roundup or Asbestos.

Tis the season of seed catalogs. Even though I haven't ordered their seeds in about six years and told them I am deceased, a few catalogs still arrive. In the past I ordered many of their high yielding, improved flavor, disease resistant seeds. In June my weed free garden showed promise of a bountiful harvest, both by me and the nearby critters. In the July hot sun I searched through the weeds only to find the critters had sampled each and every bit of my crop, except the zucchini.

Which came first, the honey bee or the nectar producing plant? Did our interest in nature lead us to become beekeepers or vice versa? Both work hand in hand and become part of the ecosystem we call nature. A beekeeper can see the trees from the forest. They learn to identify the bee friendly trees such as elm, black locust, red-bud, fruit trees, etc. The once overlooked weeds are now looked at as nectar producing plants and you now know their name. You become aware of the four seasons. The seasons tell you when to super, when swarms will occur, when to feed, etc.

The beekeeper is truly blessed. I feel sorry for people who have never experienced nature, never knowing the fascinating world that exists beyond the sidewalks.

Ken Schaefer, (618) 975-8025

### Dues for 2022 are now PAST DUE....

Membership dues were due January 1st. The dues are \$20 per year. Go to our webpage on the Members Only page complete the Membership Renewal form and pay your dues thru PayPal from the same page.

### **President.. Continued**

Our plan is to discuss this topic again during the February 25<sup>th</sup> meeting and then have a vote at the March meeting. Please provide constructive input when we discuss this topic. Thanks for your patience and consideration.

We also need to setup a fun day at Pierre Marquette State park to view the Observation Hive and deliver the donated teaching hive. I would like to make it a **Spring Bee fling** and all come out to see it and enjoy some refreshments. At the board meeting we will discuss this and come up with a couple of dates. Many thanks to Dennis for asking ISABEES and then laser engraving the

hives. They look really nice. Another thanks to ISABEES, Jeff and Beth Keller for the bees, and several additional members who have made this a success. Community projects like this are well within our charter to promote bees and pollinators in general. We all have to be the bees advocate daily.

In closing, I hope your bees are doing well and that you are ready for the spring explosion of bees as they do what they do best, being bees.

Tim Schartung  
President

### **Around the Bee Yard .....**

- Check on quantity of stores and feed
- Feed if needed
- Read and do research about beekeeping
- Check equipment
- Order Bees or Queen
- Attend classes
- Prepare for spring buildup

## **A Little Bee Humor**

Q: What does a bee get at McDonalds?

A: A hamburger!

Q: What buzzes, is black and yellow and goes along the bottom of the sea?

A: A bee in a submarine!

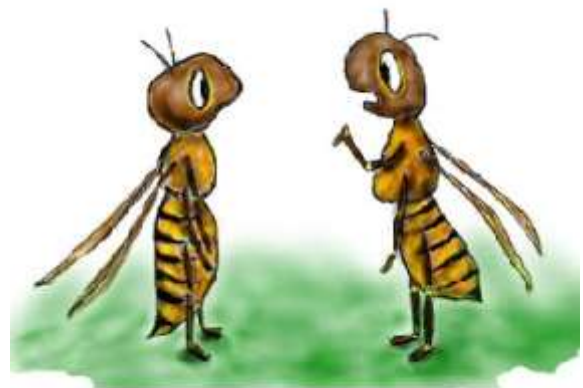
Q: What's more dangerous than being with a fool?

A: Fooling with a bee!

Q: What kind of animal kills a lot of people?

A: Hepatitis Bee.

Source: <http://jokes4us.com/animaljokes/beejokes.html>



**Okay new guy, it will be alright, stay in a tight cluster and take your turn on the edges. Spring will be here before you know it.**

## **Meeting Dates for 2022....**

***Below are the meeting dates for 2022. They are subject to change.***

Feb 25<sup>th</sup> - Madison County Farm Bureau, Edwardsville  
March 25<sup>th</sup> - St Clair County Farm Bureau, Belleville  
April 29<sup>th</sup> - Madison County Farm Bureau, Edwardsville  
May 22<sup>nd</sup> - 1st Outdoor Meeting – Scheve Park, Mascoutah, IL.  
June 26<sup>th</sup> - Outdoor meeting location, Katelyn Hentrich  
July 31<sup>st</sup> - Outdoor meeting location TBD  
Aug 28<sup>th</sup> - Outdoor meeting 6 Mile Museum, 3279 Maryville Rd, Granite City, IL  
Sept 25<sup>th</sup> - Outdoor meeting location, Rich and Darla Perkins, Freeburg  
Oct 28<sup>th</sup> - St Clair County Farm Bureau, Belleville  
Nov 18<sup>th</sup> - Madison County Farm Bureau, Edwardsville  
Dec – no meeting

If anyone would like to host the July 31st meeting at their apiary please let Program Director, Marc Mayhew, know.

### **Swarm, Cutout, and Mentor List....**

The swarming season is approaching quickly. Make sure you are on the list. The layout of the swarm, cutout, and mentor lists that we have on our website changed December 1st. At that time we started with a clean slate, and display some additional information on the list such as when you are available, what cities or areas you serve, and if you collect swarms from up high. The list is sorted by the area you serve so the public can easily see who serves their location.

Since we started with a clean slate we are asking members to sign up for these lists by going to the Members Only page on our website and complete the appropriate form. You can also sign up when you use the online form for renewing your membership. When you submit this form the club gets an email and will update the list within a 48 hours.

You can find the current lists under the Resources Menu - Mentor List and Bee Removal page on the website.

### **We are growing...**

Welcome these new members that have joined our club recently:

Craig Ackerman, Sam Droste, Tad Droste, Ashleigh Gilreath, Cindy Glaenger, Tim Hasenstab, Shane Hershman, Joseph Goebel, Meghan, Sparling, Teresa Mikelonis, Mathew Randolph, Billy & Betty Spradling, Tony Hard, Victoria Kaskutas, David Tyler, Victor Ganz, Phyllis Webb, Herbert Wesselman, and Alan Wheeler.

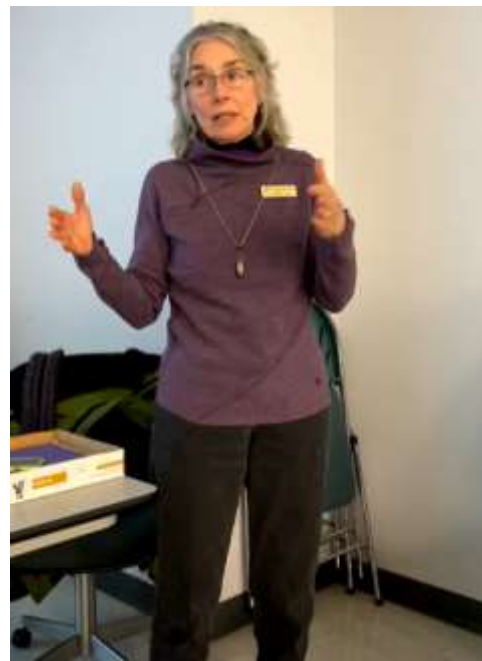
## January meeting in pictures...

*These presentations can be viewed on the Members Face Book page. Thank you for presenting.*



Marc Mayhew spoke about Bee Friendly Plants. Marc shared his experiences with yard plants and attracting the bees. He had a hand out "Gardening for Honey Bees" from the Indiana DNR. Members shared their experiences. For those not in attendance, the link for the document is [https://www.in.gov/dnr/entomology/files/ep-Gardening\\_for\\_Honey\\_Bees.pdf](https://www.in.gov/dnr/entomology/files/ep-Gardening_for_Honey_Bees.pdf)

Charity Davis-Woodard spoke about Honey Bee Nutrition Mid-Winter and Early Spring. She covered basic nutrition requirements this time of year for survival and preparation for spring build up. Key take-away is that carbohydrates (sugar/honey) and protein (pollen) is really important for the spring build up. Now you need to feed to sustain and soon feed to stimulate brood rearing.



Tom Cairns spoke about -What the bees are doing in the hive today. He spoke about what you should expect to see inside your hive this time of year. Hopefully a cluster of bees and plenty of food. He explained the purpose of the cluster and how it functions. He spoke about when to check stores and how to feed this time of year. He also talked about reading the hive and knowing when to add food and honey supers.

**SOLD OUT BY POPULAR DEMAND! We have a waiting list.**



## **INTRODUCTION TO BEEKEEPING**

Sponsored by St. Clair Beekeepers Association

### **One Day Class for the Beginning Beekeeper \*\***

Saturday, February 19, 2022 8:00 – 5:00

Location: The Hall

7132 Marine Rd

Edwardsville, IL 62025

This class is a comprehensive introduction to the fascinating and complex life of the honey bee colony and the fundamentals of managing a hive of bees as a beekeeper. The topics covered include:

**Bee Biology and Colony Behavior**

**Equipment You Will Need**

**Your First Hive -Acquiring Bees and Hive Setup**

**Opening and Inspecting Your Hive**

**Pest Management**

**The Beekeeping Year: Seasonal Management Activities**

The enrollment fee is \$55.00, and includes handouts, continental breakfast, and lunch. Additional family members may attend for \$25.00 a person. Textbooks and other related resources available. More Information and a registration form are available on the website. [www.stclairbees.com](http://www.stclairbees.com)

**\*\* State of Illinois COVID guidelines for social distancing and the wearing of face masks will be followed.**

### ***Fireside Bee Chat for February....***

The next Fireside Bee Chat will take place at 7:00pm on Wednesday, February 16th. This session will be entirely questions and answers, so please bring your questions and notepad. Watch the Members Only Face Book page and your email box for the invite. You can listen in using the phone on the invite if you don't have a computer or are not familiar with ZOOM.



## *January Fireside Bee Chat*

The club has started a new event—a Fireside Bee Chat. This is a series of virtual meetings where a topic will be presented and then followed up with a question & answer period. This is a special event for members only.

At the last Fireside Bee Chat Scott McKane talked about his visit to Slovenia and his experience with AZ Hives. We learned that in Slovenia there is 1 beekeeper per every 1,000 citizens versus 1 in every 25,000 here in the US. In Slovenia, there is a list of approved bee-friendly plants that the citizens are allowed to plant. The government will help pay for you to get into beekeeping. Slovenian's have very few bee losses over the winter. The AZ Hive is something you may want to investigate.



## *January Membership Meeting*

The first meeting of the year was held at the St. Clair Farm Bureau Building in Belleville. After the business meeting ( see Presidents Letter for more info) Marc Mayhew talked about Gardening for Bees, Charity Davis-Woodard talked about nutrition in the hive this time of the year, and Tom Cairns talked about pre-Spring Prep. We had five new members join at this meeting. Please welcome Tad Droste, Sam. Droste, Cindy Glaenzer, and Tony Hard and Vicki Kaskutas. [The meeting can be viewed on the Members Only Face Book page.](#)

## ***15th Annual Beekeeping Workshop***

**February 5th and February 12th, 2022**

The **Eastern Missouri Beekeepers Association (EMBA)** will offer two days of professional, instructional presentations **for beginners and experienced beekeepers**, by ZOOM Webinar, on Saturday, February 5, and Saturday, February 12, 2022.

Registrants may attend either or both courses for a single tuition charge of \$20. Beekeeping extension educators, research scientists, and honey bee health experts from some of the country's foremost university extension bee labs will be among the visiting faculty.

The Beginner Beekeeping course will be offered on February 5. This course is intended for novice beekeepers and persons with no prior beekeeping experience. The class will cover all aspects of basic beekeeping to prepare students to start keeping bees in 2022.

The Experienced Beekeepers course will be offered on February 12. This course is intended for hobbyist, sideliner, and commercial beekeepers. The course will place special emphasis on hive management and improving colony health.

Visit for more details <https://easternmobeekkeepers.com/emba-events/beekeeping-workshop/>



### *St. Clair Beekeepers Association*

Promoting interest in bees and beekeeping in Southern Illinois.

Email: [stclairbees@gmail.com](mailto:stclairbees@gmail.com)

The purpose and function of the St. Clair Beekeepers Association is the promotion of interest in bees **and beekeeping by such means as encouraging...**

- Good beekeeping practices
- The utilization of bees for pollination of agricultural crops
- The dissemination of information about bees and beekeeping

## NEXT MEETING DATE

Our next membership meeting will be held indoors on Friday, February 25th, at 7:00 pm at the Madison County Farm Bureau, 900 Hillsboro Rd, Edwardsville, IL The program will be all about swarms.

