



Bee BUZZ

NEWSLETTER NOVEMBER 2021

From the President ...

Dear Club Members,

Thank you for allowing me to serve as your Vice President and then as your President as this club has continued to grow in recent years. What started as my husband pestering me about moving from just gardening to keeping bees, because their numbers were dropping, has become my passion. I've felt extremely honored to share that passion with you and to use it to grow this club as many others are disappearing.

I know at times the passion I feel for beekeeping had collided with the passions of others and I am so happy to know there are so many people that want to help save the world by saving the bees. I've enjoyed the conversations about the different ways to keep bees, the different methods that everyone uses, and learning about different processes. As the leader of the Club, I know I was not faultless, but I do think the club has experienced great growth in not only members, but in acceptance and understanding of the myriad ways in which people keep bees.

A consequence of the growth of our club is that I now found myself needing to hand the reins over to the next generation so they can use their skills to carry on the work. I am proud to step aside and watch the club continue to grow in size and experience. There are so many amazing opportunities that I can't wait to watch this club take advantage of and I look forward to hosting bee yard events with the club in the future.

As I turn my passions and attentions more towards my bees and The Six Mile Museum, I look forward to continue supporting the Club as a standard member like you. Again, Thank You for all of your years of support and friendship.

Julie McKinney

President



INSIDE THIS ISSUE:

Old Timer's Way	2
Dues notice	2
Nov Bee Calendar	3
Bee Humor	3
Overwintering Bees	4
Announcements	5
Around the Bee Yard	5
Observation Hive	6
Changes coming	6
Meeting pictures	7
-Notice of meeting	8

Old Timer's Way

By Ken Schaefer

In thinking of our upcoming holiday banquet, I began reminiscing of past banquets.

It was a big event for the twenty or so members back then. For some of the men it was a suit and tie event. The former chief apiary inspector, Carl Killion, along with his son Gene, the present apiary inspector at that time, would travel from Paris, Illinois to attend. Some years Walter Kelley would also attend.

I don't recall specific dates of events or when Lawrence Lieper was born, but he did tell me as a child he traveled with his parents by covered wagon to Oklahoma. They couldn't make a living there, so they returned to Belleville. Lawrence grew up, married and had children. At some point he had a serious back injury which left him bedridden in a hospital. He lay there in pain and worried about how he would support his family. One day an old beekeeper visited him and smuggled in a jar of honeybees. The man said bee stings on his back would ease the pain. Lawrence was willing to try anything. Within two days he was out of the hospital and walking. He was so grateful he spent the rest of his time dedicated to honeybees. He then became a beekeeper, apiary inspector, and then a leader of the club as well as a mentor to all new members, including myself. Lawrence said that during WWII sugar was rationed, so many turned to keeping bees as their sweetener. The club met in the basement of the old Farm Bureau on Lincoln Street near downtown Belleville. There was standing room only at that time. After the war sugar again became plentiful and people lost interest in keeping bees. The club got down to three members and it was suggested that it disband, but Lawrence said no. I'm glad Lawrence got his way, so that we can continue to this day.

Enough stories for now. I'll continue more stories in future *Oldtimers' Way* articles.

Ken Schaefer, (618) 975-8025

Dues for 2022 will be dues January 1, 2020.

The holidays are a busy time, so please consider paying your dues early. The dues are \$20 per year. Go to our webpage on the Members Only page complete the Membership Renewal form.

The Beekeeper's Calendar Of Important Events

Reprinted with permission from David Burns an EAS certified Master Beekeeper, go to www.honeybeesonline.com

NOVEMBER AND THE BEES: The bees continue to cluster for winter. They may not yet go into a full winter cluster, and may actually develop two clusters. They may break cluster frequently on warm days and recluster at night. But they will begin to cluster for the winter.

NOVEMBER AND THE BEEKEEPER: Feed your light hives as long as the sugar water doesn't freeze. Finish up all winterization of your hives. On a cold day when the bees are all inside, weed-eat around your hives. Enjoy Thanksgiving! Start purchasing next year's equipment.

([Beekeeping in 2021: The Beekeeper's Calendar Of Important Events \(basicbeekeeping.blogspot.com\)](http://basicbeekeeping.blogspot.com))

Newly Elected Officers for 2021-2022

Tim Schartung—President

Tom Cairns—Vice President

Katelyn Hentrich—Secretary

Dennis Hessel—Treasurer

Marc Mayhew—Program Director

Frank Dorris—Director

Congratulations to the new officers and THANK YOU to the past officers. Please help them out when asked to do so. We still need two more directors.

A Little Bee Humor

Q: What do you call a bee who single handedly defended the colony from a wasp attack?

A: Not to shab-bee.

Q: What did the confused bee say?

A: To bee or not to bee!

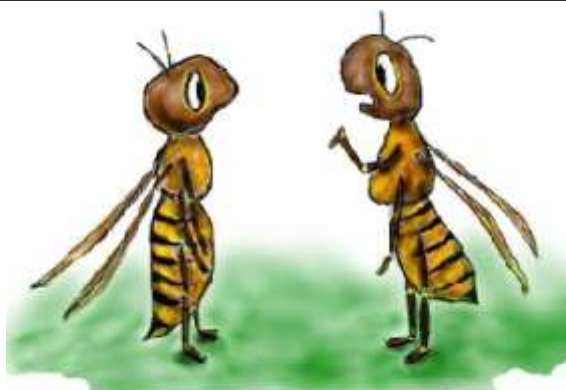
Q: What do you call a Bee who is having a bad hair day?

A: A Frisbee.

Q: What do bees do if they want to use public transport?

A: Wait at a buzz stop!

Source: <http://jokes4us.com/animaljokes/beejokes.html>



Okay new guy, you will notice that we are starting to get our food delivered and that is not quite the same as what we get when we dine out.

Announcements

LAST CALL—The fall meeting of the Illinois State Beekeepers Association

will take place November 13, 2021 for the ISBA Annual Fall Meeting. Not ready for registrations yet, but here is some teaser information

Different venue - the Fall Meeting will be held at the **Northfield Inn and Conference Center - Springfield**

- Member price \$20 - Includes lunch
- Non Member price \$30 - includes lunch
- Members who are active duty military or veterans - \$10 includes meal
- Attendance will be limited to the first 150

The **Northfield Inn** is offering a special room rate of \$85 per night plus taxes. Each room has double queen beds and includes complimentary breakfast.

Overwintering bees in Southern Illinois by Ken Kloepper...

My method of overwintering bees in southern Illinois is perhaps a little different than most of you are accustomed to. I raise a lot of nucs for overwintering and have found most winters we have sufficient breaks in the weather to allow for occasional cleansing flights. This is important. Successful overwintering is largely dependent on healthy bees going into winter in the first place. Make sure, in August, that your mite counts are low, ideally less than 3 mites/100 bees. Also, make sure small hive beetles haven't gotten a foothold in your hive. They will overwinter inside the cluster right along with the bees.

I try to get my nucs into single hive bodies and feed syrup in October if stores are low. For this I use 1 gallon Ziploc bags directly over the frames inside a 3" high "Kloepper" feeder rim with a 3/8" x 3/4" opening in front to allow for an upper entrance. I try to feed something close to 2:1 sugar to water but don't get too concerned if it isn't that thick. I have never heard any complaints from the bees! Use hot water in order to get as much sugar into solution as possible. I feed like this until the temperatures (daytime highs) drop into the lower 50's at which point the bees will no longer take the syrup.

Once the bees stop feeding on the syrup, I remove any liquid syrup feed bags and start placing 2 to 3 sugar bricks directly over the cluster. In addition, I place a, roughly 8 1/2" x 9" x 1 3/4" Styrofoam block inside a clean 1 gallon Ziplock bag (it is easier to make that block from several strips of Styrofoam rather than one large block). This block is placed over the center 6 frames with two sugar bricks directly behind it. I make sure the frames to either side of the center six frames are primarily filled with honey on both sides. No empty combs or foundation should be in frame positions #2 and #9.

Of course, I make sure to install entrance reducers in late October to keep the mice out, and I also install a homemade piece of FRP (Fiberglass reinforced plastic ... 4 x 8 sheets available at Home Depot) board over my screened bottom boards to help keep the winter winds out.

By picking a warm day (preferably at least in the 40's) during the last 2 weeks of December, I will go through each hive and add additional sugar bricks as necessary so I know they have food directly over the cluster going into January's typically extreme cold weather. Another check in early February is usually all that is needed to make sure they have sufficient stores to carry them into spring. However, as with any type of overwintering of your colonies, the most likely time for the bees to starve is late winter or early spring, as brood rearing is getting under way and springtime nectar may not yet be available. So check as necessary!



Introduction to Beekeeping Class ...

Saturday, February 19, 2022, hold the date. This is the date for our annual Introduction to Beekeeping Class. This year we are planning on holding this as live in-person event. We are still working on the location and the lesson plan for this year. More details to come.

As you know, our club is run by volunteers. Please consider assisting with this event. If you are interested in helping out or working on the planning committee send an email to Marc Mayhew, our Program Director, at mjmayhew@Yahoo.com

Annual Thanksgiving Dinner Meeting ...

Our Annual Thanksgiving Dinner Meeting will take place on Friday, November 19th at 6:00 pm. We will hold this event at the Madison County Farm Bureau, 900 Hillsboro Ave, Edwardsville. The Club will purchase the ham and the turkey and we ask everyone to bring a side dish. In order to make sure we have enough meat for the meal, please RSVP by November 16th, using Face Book or on the Meeting Info page of our website .

Around the Bee Yard

- Put on mouse guards.
- Treat for mites. With oxalic acid late in the month
- Insulate or wrap your hives if you plan to do so this winter
- Clean and properly store unused frames and hive bodies
- Start planning your next year's activities
- Pay your 2022 dues
- Attend the SCBA Annual Thanksgiving Potluck November 19th 6:00pm



Pere Marquette Visitor Center

Recently the SCBA, installed a colony of bees in an observation hive at the Pere Marquette Visitor Center. The hive had been empty for some time. Thank You to Jeff and Beth Keller for providing the bees. Jeff Keller, Tim Schartung and his wife recently installed the bees, and have visited the hive to see how it is doing. Recently, Julie McKinney, Tom Cairns, and Dennis Hessel visited the hive to see how it is doing. In the near future we would like to set up a revolving group of volunteers to check out the hive and perhaps be there on weekend to answer questions from the visitors. This is an excellent opportunity to promote beekeeping. More to come in the future.



The observation hive all closed up. Note tube going thru window for access to outside.



Julie McKinney and Tom Cairns look at stores and for the queen. Never did see her.

IMPORTANT CHANGES

The Stclairbees.com webpage has a new look. Check it out.

From the front page click on Members Only, from there you will be able to submit your name to be added to the Swarm List, Cutout List, Mentor List, and renew your membership. Club membership runs January through December and the dues are \$20.00 a year and are due January 1st. Each year we ask that you submit the membership renewal form with your current information. You may pay your dues from that page using PayPal or you may mail a check payable to SCBA to Dennis Hessel, 1720 Cloverdale Dr, Edwardsville, IL 62025.

In December the Swarm list, Cutout List, and Mentor List will be purged. If you would like to be included on these lists either indicate so when you renew your membership or you can use the sign-up forms on the Members Only page of our website.

October meeting in pictures ...

October 29th, the club held the first indoor meeting since the Fall of 2019. There were 18 people in attendance and 4-5 on ZOOM. Marc Mayhew made a presentation on How to Make Mead. Samples were distributed to those in attendance.



Member shows winter cover he uses.



Marc Mayhew gives presentation on How to Make



Marc shares samples of his mead with members.



Members sample mead.



St. Clair Beekeepers Association

Promoting interest in bees and beekeeping in Southern Illinois.

Email: stclairbees@gmail.com

The purpose and function of the St. Clair Beekeepers Association is the promotion of interest in bees **and beekeeping by such means as encouraging...**

- Good beekeeping practices
- The utilization of bees for pollination of agricultural crops
- The dissemination of information about bees and beekeeping

NEXT MEETING DATE

Our next membership meeting will be held indoors on Friday, November 19th, at 6:00 PM at the Madison County Farm Bureau, 900 Hillsboro Ave, Edwardsville, IL This is our Annual Thanksgiving Potluck. The club will be providing ham and please bring a side dish. There will be no formal meeting, just good food, great company, and a lot of catching up with your friends.

Don't forget to RSVP.

QR CODE FOR MEETING PLACE

